

Bass Clarinet in B \flat

Poston Band Warm-up Packet

J. Bock

Long Tone 1

Two staves of music for Long Tone 1. The first staff is in 4/4 time and contains five measures of whole notes: G \flat (2nd line), B \flat (3rd space), D \flat (4th space), E \flat (5th space), and F \flat (6th space). The second staff contains five measures of whole notes: G \flat (2nd line), B \flat (3rd space), D \flat (4th space), E \flat (5th space), and F \flat (6th space), with a fermata over the final note.

Long Tone 2

Two staves of music for Long Tone 2. The first staff contains eight measures of whole notes: G \flat (2nd line), B \flat (3rd space), D \flat (4th space), E \flat (5th space), F \flat (6th space), G \flat (2nd line), B \flat (3rd space), and D \flat (4th space). The second staff contains eight measures of whole notes: E \flat (5th space), F \flat (6th space), G \flat (2nd line), B \flat (3rd space), D \flat (4th space), E \flat (5th space), F \flat (6th space), and G \flat (2nd line), with a fermata over the final note.

Long Tone 3

Two staves of music for Long Tone 3. The first staff contains eight measures of whole notes: G \flat (2nd line), A \flat (3rd space), B \flat (3rd space), C \flat (4th space), D \flat (4th space), E \flat (5th space), F \flat (6th space), and G \flat (2nd line). The second staff contains eight measures of whole notes: G \flat (2nd line), A \flat (3rd space), B \flat (3rd space), C \flat (4th space), D \flat (4th space), E \flat (5th space), F \flat (6th space), and G \flat (2nd line), with a fermata over the final note.

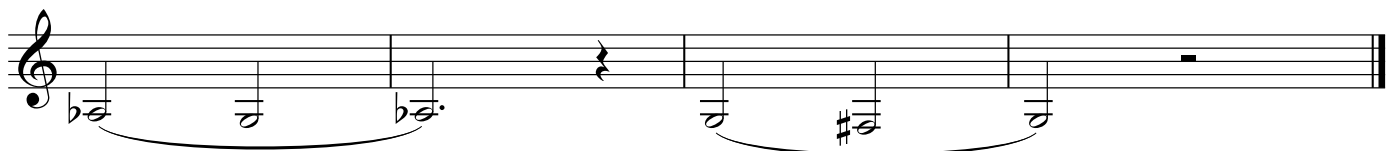
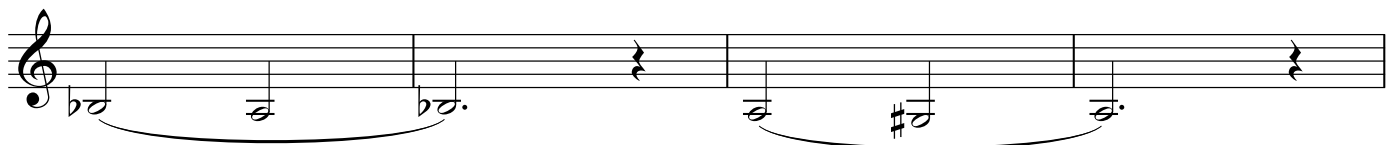
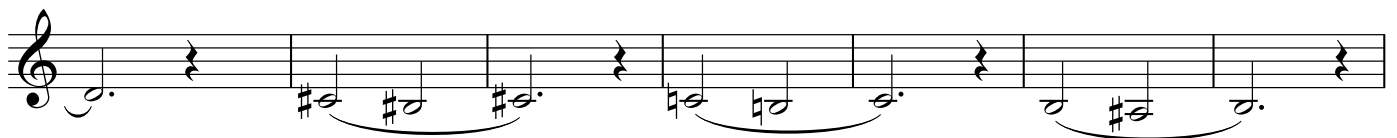
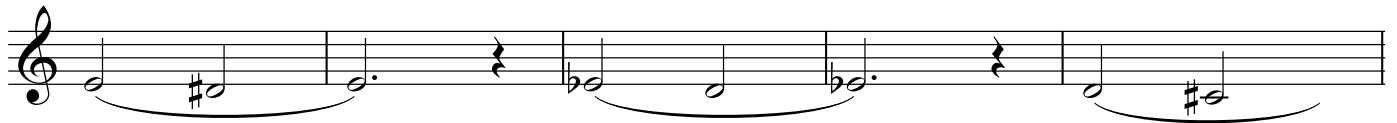
Long Tone 4

Three staves of music for Long Tone 4. The first staff contains eight measures of whole notes: G \flat (2nd line), A \flat (3rd space), B \flat (3rd space), C \flat (4th space), D \flat (4th space), E \flat (5th space), F \flat (6th space), and G \flat (2nd line). The second staff contains four measures of whole notes: A \flat (3rd space), B \flat (3rd space), C \flat (4th space), and D \flat (4th space). The third staff contains four measures of whole notes: E \flat (5th space), F \flat (6th space), G \flat (2nd line), and A \flat (3rd space), with a fermata over the final note.

Long Tone 5



Long Tone 6



Warm-up 1-A

Warm-up 1-A consists of two staves of music. The first staff begins with a treble clef and contains four measures of music: a quarter note G4, a quarter note A4, a quarter note B4, a quarter note C5, a quarter note B4, a quarter note A4, a quarter note G4, and a whole note F4. The second staff continues with four measures: a quarter note E4, a quarter note D4, a quarter note C4, a quarter note B3, a quarter note A3, a quarter note G3, a quarter note F3, and a whole note E3.

Warm-up 1-B

Warm-up 1-B consists of two staves of music. The first staff begins with a treble clef and contains four measures of eighth-note patterns: G4-A4-B4-C5, B4-A4-G4-F4, E4-D4-C4-B3, and A3-G3-F3-E3. The second staff continues with four measures: D4-C4-B3-A3, G3-F3-E3-D3, C3-B2-A2-G2, and F2-E2-D2-C2.

Warm-up 1-C

Warm-up 1-C consists of two staves of music. The first staff begins with a treble clef and contains four measures of eighth-note patterns: G4-A4-B4-C5, B4-A4-G4-F4, E4-D4-C4-B3, and A3-G3-F3-E3. The second staff continues with four measures: D4-C4-B3-A3, G3-F3-E3-D3, C3-B2-A2-G2, and F2-E2-D2-C2.

Warm-up 2-A

Warm-up 2-A consists of two staves of music. The first staff begins with a treble clef and contains four measures of music: a quarter note G4, a quarter note A4, a quarter note B4, a quarter note C5, a quarter note B4, a quarter note A4, a quarter note G4, and a whole note F4. The second staff continues with four measures: a quarter note E4, a quarter note D4, a quarter note C4, a quarter note B3, a quarter note A3, a quarter note G3, a quarter note F3, and a whole note E3.

Warm-up 2-B

Warm-up 2-B consists of three staves of music in treble clef. The first staff contains five measures of eighth-note runs. The second staff contains five measures, including a key signature change to one flat (B \flat) in the second measure. The third staff contains five measures, ending with a double bar line.

Warm-up 3-A

Warm-up 3-A consists of two staves of music in treble clef. The first staff contains four measures of music with slurs over groups of notes. The second staff contains four measures, also with slurs, and ends with a double bar line.

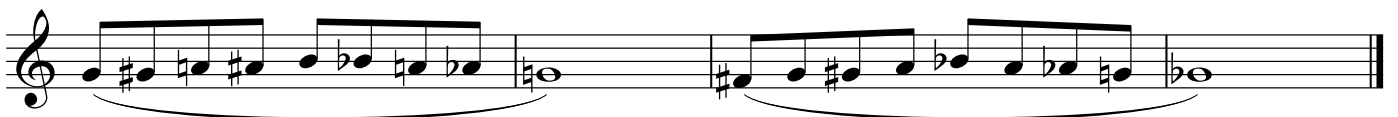
Warm-up 3-B

Warm-up 3-B consists of three staves of music in treble clef. Each staff contains four measures of music with long slurs spanning across the measures. The key signature changes to two flats (B \flat , E \flat) in the second measure of the second staff and remains there through the end of the piece.

Warm-up 3-C



Warm-up 4-A



Warm-up 4-B

The musical score for Warm-up 4-B is written for Bass Clarinet in B \flat and consists of seven staves of music. The key signature is one sharp (F#) and the time signature is 4/4. The piece is characterized by a continuous eighth-note pattern across all staves, with various accidentals (sharps, naturals, and flats) and slurs. The first staff begins with a treble clef and a key signature of one sharp. The second staff continues the pattern with a natural sign on the second measure. The third staff introduces a flat on the second measure. The fourth staff features a natural on the second measure and a flat on the fourth measure. The fifth staff has a flat on the second measure. The sixth staff has a flat on the second measure. The seventh staff concludes the piece with a flat on the second measure and a final whole note rest.