

Clarinet in B \flat

Poston Band Warm-up Packet

J. Bock

Long Tone 1

Two staves of music for Long Tone 1. The first staff is in 4/4 time and contains five whole notes: G \flat (below staff), G \flat (below staff), G \flat (below staff), G \flat (below staff), and G \flat (below staff). The second staff contains five whole notes: G \flat (below staff), G \flat (below staff), G \flat (below staff), G \flat (below staff), and G \flat (below staff) with a fermata.

Long Tone 2

Two staves of music for Long Tone 2. The first staff contains eight whole notes: G \flat (below staff), G \flat (below staff), G \flat (below staff), G \flat (below staff), G \flat (below staff), G \flat (below staff), G \flat (below staff), and G \flat (below staff). The second staff contains eight whole notes: G \flat (below staff), G \flat (below staff), G \flat (below staff), G \flat (below staff), G \flat (below staff), G \flat (below staff), G \flat (below staff), and G \flat (below staff) with a fermata.

Long Tone 3

Two staves of music for Long Tone 3. The first staff contains eight whole notes: G \flat (below staff), G \flat (below staff), G \flat (below staff), G \flat (below staff), G \flat (below staff), G \flat (below staff), G \flat (below staff), and G \flat (below staff). The second staff contains eight whole notes: G \flat (below staff), G \flat (below staff), G \flat (below staff), G \flat (below staff), G \flat (below staff), G \flat (below staff), G \flat (below staff), and G \flat (below staff) with a fermata.

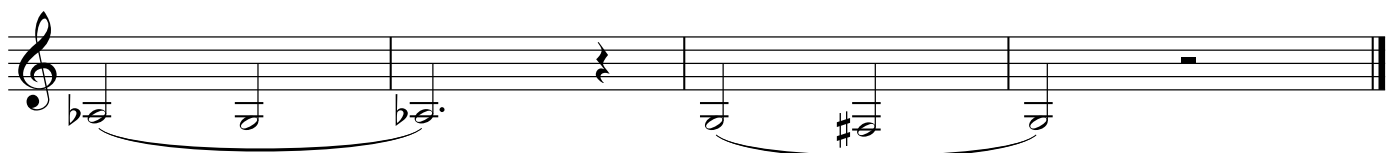
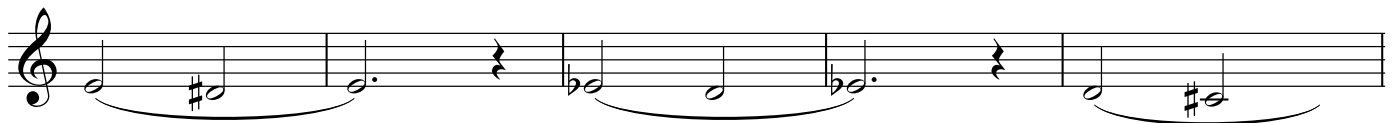
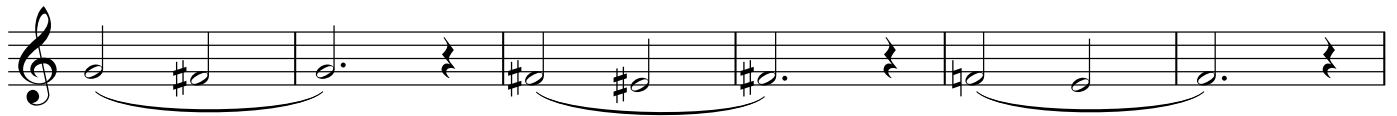
Long Tone 4

Three staves of music for Long Tone 4. The first staff contains eight eighth notes: G \flat (below staff), G \flat (below staff), G \flat (below staff), G \flat (below staff), G \flat (below staff), G \flat (below staff), G \flat (below staff), and G \flat (below staff). The second staff contains eight eighth notes: G \flat (below staff), G \flat (below staff), G \flat (below staff), G \flat (below staff), G \flat (below staff), G \flat (below staff), G \flat (below staff), and G \flat (below staff). The third staff contains eight eighth notes: G \flat (below staff), G \flat (below staff), G \flat (below staff), G \flat (below staff), G \flat (below staff), G \flat (below staff), G \flat (below staff), and G \flat (below staff) with a fermata.

Long Tone 5



Long Tone 6



Warm-up 1-A



Warm-up 2-B

Warm-up 2-B consists of three staves of music. The first staff contains four measures of eighth-note runs: C4-D4-E4-F4-G4-A4-B4, C4-D4-E4-F4-G4-A4-B4, C4-D4-E4-F4-G4-A4-B4, and C4-D4-E4-F4-G4-A4-B4. The second staff contains four measures: C4-D4-E4-F4-G4-A4-B4, C4-D4-E4-F4-G4-A4-B4, C4-D4-E4-F4-G4-A4-B4, and C4-D4-E4-F4-G4-A4-B4. The third staff contains four measures: C4-D4-E4-F4-G4-A4-B4, C4-D4-E4-F4-G4-A4-B4, C4-D4-E4-F4-G4-A4-B4, and C4-D4-E4-F4-G4-A4-B4.

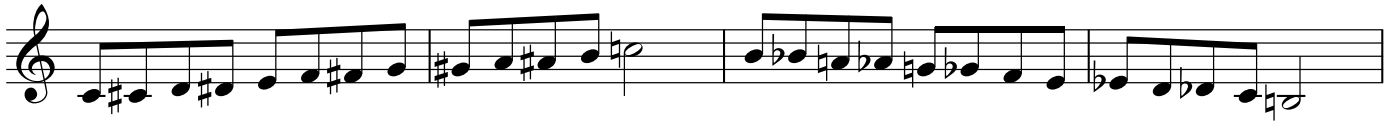
Warm-up 3-A

Warm-up 3-A consists of two staves of music. The first staff contains four measures of quarter notes with slurs: C4-D4-E4-F4, G4-A4-B4, C4-D4-E4-F4, and G4-A4-B4. The second staff contains four measures of quarter notes with slurs: C4-D4-E4-F4, G4-A4-B4, C4-D4-E4-F4, and G4-A4-B4.

Warm-up 3-B

Warm-up 3-B consists of three staves of music. The first staff contains four measures of quarter notes with slurs: C4-D4-E4-F4, G4-A4-B4, C4-D4-E4-F4, and G4-A4-B4. The second staff contains four measures of quarter notes with slurs: C4-D4-E4-F4, G4-A4-B4, C4-D4-E4-F4, and G4-A4-B4. The third staff contains four measures of quarter notes with slurs: C4-D4-E4-F4, G4-A4-B4, C4-D4-E4-F4, and G4-A4-B4.

Warm-up 3-C



Warm-up 4-A



Warm-up 4-B

The musical score for Clarinet in B \flat , Warm-up 4-B, consists of seven staves of music. Each staff begins with a treble clef and a key signature of one sharp (F#). The music is written in a single melodic line. The first staff contains a sequence of eighth notes with various accidentals, including sharps and flats, and is marked with a slur. The second staff continues this sequence with similar rhythmic and melodic patterns. The third staff features a more complex rhythmic pattern with eighth notes and rests, also marked with a slur. The fourth staff continues the sequence with eighth notes and rests, marked with a slur. The fifth staff features a more complex rhythmic pattern with eighth notes and rests, marked with a slur. The sixth staff continues the sequence with eighth notes and rests, marked with a slur. The seventh staff concludes the piece with a final sequence of eighth notes and rests, marked with a slur, and ends with a double bar line.