

Poston Band Warm-up Packet

Oboe

J. Bock

Long Tone 1

Two staves of musical notation for Long Tone 1. The first staff shows a treble clef, a key signature of two flats (Bb and Eb), and a 4/4 time signature. It contains five measures of whole notes: Bb4, Eb5, Bb4, Eb5, and Bb4. The second staff continues with three measures of whole notes: Eb5, Bb4, and Eb5, followed by a final measure with a whole note Eb5 and a fermata.

Long Tone 2

Two staves of musical notation for Long Tone 2. The first staff shows a treble clef, a key signature of two flats, and a 4/4 time signature. It contains nine measures of whole notes: Bb4, Eb5, Bb4, a whole rest, Eb5, Bb4, Eb5, a whole rest, and Bb4. The second staff continues with three measures of whole notes: Eb5, Bb4, and Eb5, followed by a final measure with a whole note Eb5 and a fermata.

Long Tone 3

Two staves of musical notation for Long Tone 3. The first staff shows a treble clef, a key signature of two flats, and a 4/4 time signature. It contains nine measures of whole notes: Bb4, Eb5, Bb4, a whole rest, Eb5, Bb4, Eb5, a whole rest, and Bb4. The second staff continues with three measures of whole notes: Eb5, Bb4, and Eb5, followed by a final measure with a whole note Eb5 and a fermata.

Long Tone 4

Three staves of musical notation for Long Tone 4. The first staff shows a treble clef, a key signature of two flats, and a 4/4 time signature. It contains eight measures of whole notes: Bb4, Eb5, Bb4, a whole rest, Eb5, Bb4, Eb5, and Bb4. The second staff continues with three measures of whole notes: a whole rest, Bb4, and a whole rest, followed by a final measure with a whole note Bb4 and a fermata. The third staff continues with three measures of whole notes: a whole rest, Bb4, and a whole rest, followed by a final measure with a whole note Bb4 and a fermata.

2

Oboe

Long Tone 5

First line of musical notation for Long Tone 5. It consists of a single treble clef staff with a key signature of one flat (B-flat). The notes are: B-flat (quarter), B-flat (quarter), B-flat (quarter), B-flat (quarter), B-flat (quarter), B-flat (quarter), B-flat (quarter), B-flat (quarter), B-flat (quarter), B-flat (quarter). There are rests in the second, fourth, and sixth measures.

Second line of musical notation for Long Tone 5. It consists of a single treble clef staff with a key signature of one flat. The notes are: B-flat (quarter), B-flat (quarter), B-flat (quarter), B-flat (quarter), B-flat (quarter), B-flat (quarter), B-flat (quarter), B-flat (quarter), B-flat (quarter), B-flat (quarter). There are rests in the second, fourth, and sixth measures. The line ends with a double bar line.

Long Tone 6

First line of musical notation for Long Tone 6. It consists of a single treble clef staff with a key signature of one flat. The notes are: B-flat (quarter), B-flat (quarter), B-flat (quarter), B-flat (quarter), B-flat (quarter), B-flat (quarter), B-flat (quarter), B-flat (quarter), B-flat (quarter), B-flat (quarter). There are rests in the second, fourth, and sixth measures.

Second line of musical notation for Long Tone 6. It consists of a single treble clef staff with a key signature of one flat. The notes are: B-flat (quarter), B-flat (quarter), B-flat (quarter), B-flat (quarter), B-flat (quarter), B-flat (quarter), B-flat (quarter), B-flat (quarter), B-flat (quarter), B-flat (quarter). There are rests in the second, fourth, and sixth measures.

Third line of musical notation for Long Tone 6. It consists of a single treble clef staff with a key signature of one flat. The notes are: B-flat (quarter), B-flat (quarter), B-flat (quarter), B-flat (quarter), B-flat (quarter), B-flat (quarter), B-flat (quarter), B-flat (quarter), B-flat (quarter), B-flat (quarter). There are rests in the second, fourth, and sixth measures.

Fourth line of musical notation for Long Tone 6. It consists of a single treble clef staff with a key signature of one flat. The notes are: B-flat (quarter), B-flat (quarter), B-flat (quarter), B-flat (quarter), B-flat (quarter), B-flat (quarter), B-flat (quarter), B-flat (quarter), B-flat (quarter), B-flat (quarter). There are rests in the second, fourth, and sixth measures.

Fifth line of musical notation for Long Tone 6. It consists of a single treble clef staff with a key signature of one flat. The notes are: B-flat (quarter), B-flat (quarter), B-flat (quarter), B-flat (quarter), B-flat (quarter), B-flat (quarter), B-flat (quarter), B-flat (quarter), B-flat (quarter), B-flat (quarter). There are rests in the second, fourth, and sixth measures. The line ends with a double bar line.

Warm-up 1-A



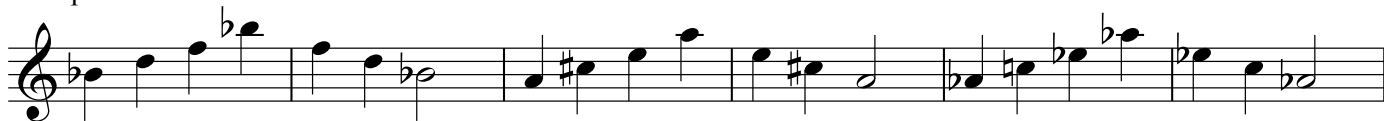
Warm-up 1-B



Warm-up 1-C

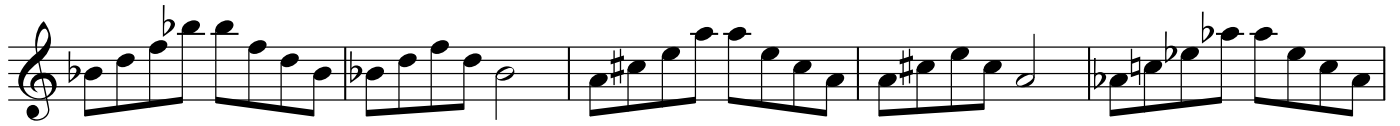


Warm-up 2-A

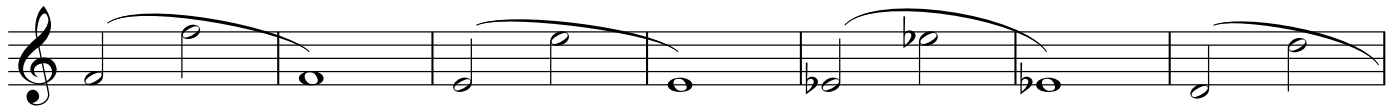


4 Warm-up 2-B

Oboe



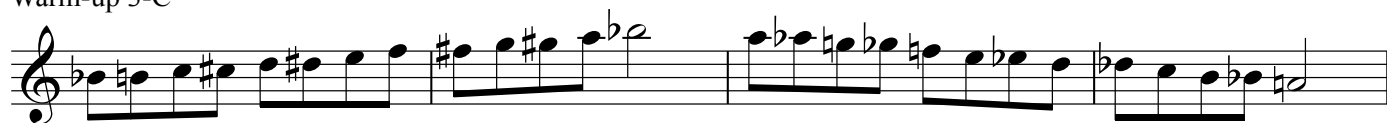
Warm-up 3-A



Warm-up 3-B



Warm-up 3-C



Warm-up 4-A



6 Warm-up 4-B

Oboe

